



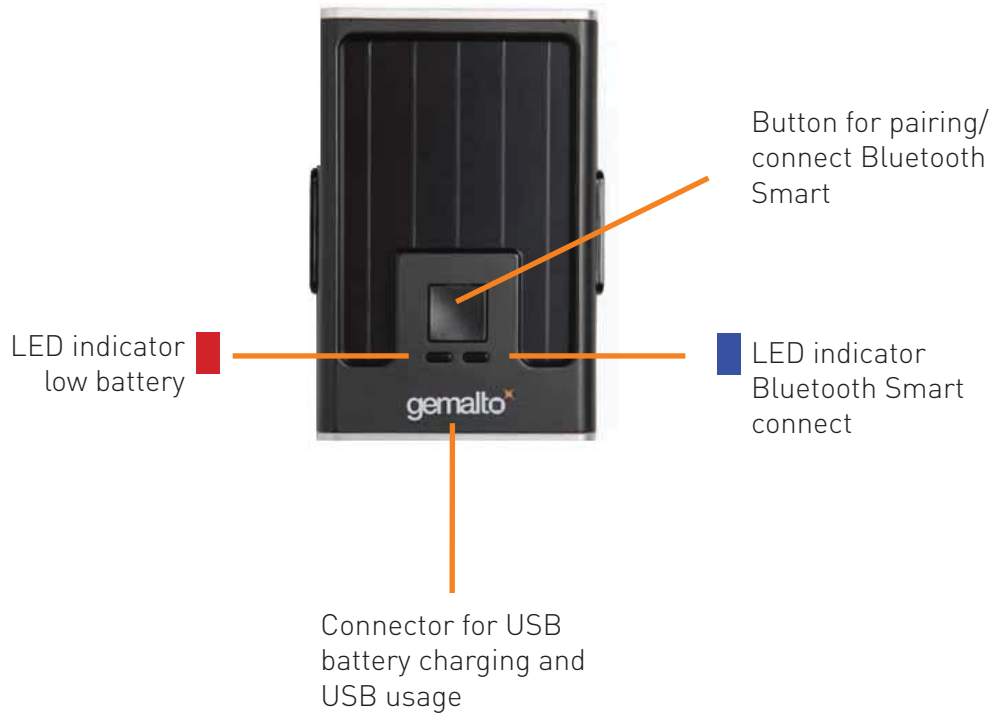
# SafeNet Reader CT1100

For Windows 7, 8.1 and 10

User Guide

# General Features

## Device features



### Battery LED

#### Low Battery

- LED red indicator light is ON

#### Battery is charging

- LED red indicator light blinks slowly

#### Charge complete

- LED red indicator light is OFF

### Bluetooth Smart LED

#### Discovery: waiting for a connection

- LED blue light flashing (short flash)

#### Pairing mode

- LED blue indicator light blinks quickly (after pushing primary button for 3 sec to initiate)

#### Bluetooth Smart connected

- LED blue indicator light blinks at normal speed (1sec on, 1 sec off)

#### Data transfer

- LED blue indicator light is ON

#### Deep Sleep

- LED blue indicator light is OFF

# Modes

## Turning on and off

### Power on

- Push button once to turn on Bluetooth connectivity.

### Power off

- Push button and hold for 6 seconds to turn off device.
- In Bluetooth mode, remove the card to turn off device.

### Wake up

- Device will go into deep sleep/power saving mode after 4 minutes of no connection or operation. Push primary button to turn back on.

## Charging

### Charging through USB

- Battery charges fully in 3 hours.
- Bluetooth Smart wireless interface can be activated when charging through USB by pressing the button.
- Please note that USB connectivity will not be available during a Bluetooth session.

### Charging with external power

- Bluetooth Smart wireless interface will still be active when charging on USB external power adaptor

## Quick start

### Battery

- Ensure battery is properly charged

### Software

- Check Gemalto software package is installed correctly

### Initiate pairing

- Press primary button for 3 seconds to set badge holder into pairing mode. The LED will blink quickly
- Once pairing communication has started, the badge holder switches to non-discoverable mode, and is not visible to any other master
- If pairing is not confirmed within 4 minutes, the badge holder goes back to deep sleep mode and disconnects.

### Pairing Complete

- The badge holder can record up to 10 different paired master devices. If list of paired devices is full when trying to pair with a new device, the master in that list that was connected the longest time ago will be removed

### Detection Range

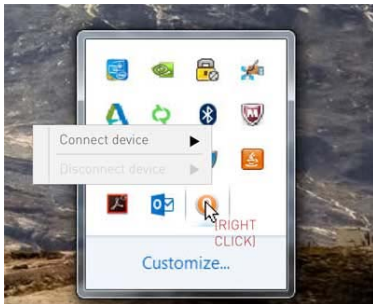
- The badge holder disconnects and enters deep sleep mode if moved away out of device detection range.

# SafeNet Reader CT1100

## Visual Reference

### Pairing

1). Left click the Bluetooth icon to initiate pairing



2). Window will appear with list of previously paired devices. Select device to connect.



3). If your device has not been paired yet, click the + to add device.



4). You can now put your device in pairing mode



5). Your device will be connected



6). Select the autoconnect checkbox if you want the device to connect whenever in range



7). After the one-time pairing, your device will show in the list

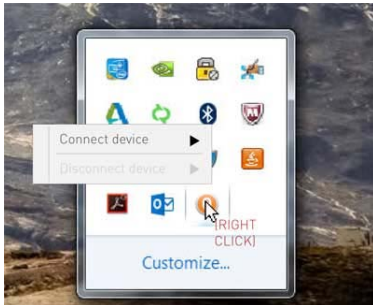


# SafeNet Reader CT1100

## Visual Reference

### Connecting

1). Left click the Bluetooth icon to quickly connect



2). The device will now appear as connected. If device is not on auto-connect, click on the device line to connect

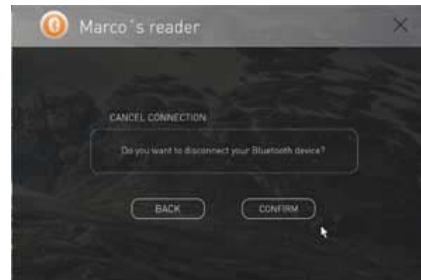


### Disconnecting

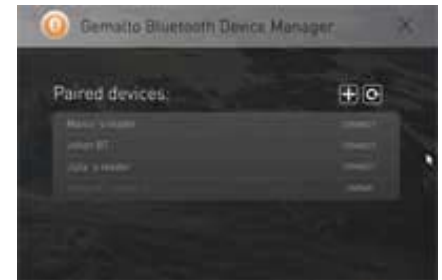
1). Select disconnect device



2). A prompt will appear to make sure you want to disconnect. Press confirm to disconnect



3). The device will now appear as ready to connect



### Unpairing

1). Select device to unpair



2). Select unpair device



3). Confirm you want to unpair. The device will show unpaired



# Troubleshooting

## Device won't connect

### **What to do if you cannot use CT1100 from your device ?**

- Make sure your OS is up-to-date
- Check all the components and ensure they are installed properly on your device
- Check that the CT1100 battery is charged
- Check that the CT1100 is powered ON
- Check that the pairing between your device and CT1100 was done correctly
- Check that your smart card is correctly inserted in CT1100

# Compliance and Safety

## Regulatory and Safety Notices

### USA: Federal Communications Commission (FCC) Statement

This device complies with FCC part 15 FCC Rules. Operation is subject to the following two conditions:

1. This device may not cause harmful interference and
2. This device must accept any interference, including interference that may cause undesired operation of the device.

### FCC Warning

Changes or modifications not expressly approved by the party responsible for compliance could void the user's authority to operate the equipment.

Note: This equipment has been tested and found to comply with the limits for a Class B digital device, pursuant to part 15 of the FCC Rules. These limits are designed to provide reasonable protection against harmful interference in a residential installation. This equipment generates, uses and can radiate radio frequency energy and, if not installed and used in accordance with the instruction, may cause harmful interference to radio communications. However, there is no guarantee that interference will not occur in a particular installation. If this equipment does cause harmful interference to radio or television reception which can be determined by turning the equipment off and on, the user is encouraged to try to correct interference by one or more of the following measures:

- Reorient or relocate the receiving antenna.
- Increase the separation between the equipment and receiver.
- Connect the equipment into an outlet on circuit different from that to which the receiver is connected.
- Consult the dealer or an experienced radio/TV technician for help.

This device meets the FCC requirements for RF exposure in public or uncontrolled environments.

### EU (European Union): European Community declaration of conformity

We Gemalto, located at 525 avenue du Pic de Bertagne, 13881 Gémenos Cedex, France, declare under our responsibility that the products: USB & BLE Smart Card Reader and SafeNet Reader CT1100 conforms to the following product specifications:

Radio:	ETSI EN 300 328 (V1.8.1) EMF EN 62311 (2008)
EMC:	ETSI EN 301 489-1 v1.9.2 (2011-09) ETSI EN 301 489-17 v2.2.1 (2012-09) EN 55022 (2010) AC (2011) EN 55024 (2010) EN 61000-4-2 (2009) EN 61000-4-3 (2006) +A1 (2008) +A2 (2010)
Safety:	EN 60950-1 / A1 (2013)
Energy:	Regulation 1275/2008
Restricted Substances:	EN 50581:2012
CE marking year:	2015

# Compliance and Safety

## Additional information:

The product herewith complies with the requirements of the  
R&TTE Directive 1999/5/EEC  
EMC Directive 2004/108/EC, Low Voltage Directive 2006/95/EC  
Ecodesign requirements for Energy Related Products Directive 2009/125/EC  
RoHS Recast Directive 2011/65/EU

## Important Safety Instructions

- Read these instructions.
- Keep these instructions.
- Heed all warnings.
- Follow all instructions.
- Do not attempt to open the device. Substances contained in this product and/or its battery may damage the environment and/or human health if handled and disposed of improperly.
- Do not tamper with your device.
- Do not use abrasive cleaners to clean your device.
- Do not place your device in a dishwasher, washing machine or dryer.
- Do not expose your device to extremely high or low temperatures.
- Do not use your device in a sauna or steam room.
- Do not leave your device in direct sunlight for an extended period of time.
- Do not leave your device near open flames.
- Do not dispose of your device in a fire. The battery could explode.
- Do not attempt to disassemble your device. It does not contain serviceable components.
- Never allow children to play with the device. The small components may be a choking hazard!

## Built-in Battery Precautions

- Do not attempt to replace your device battery. It is built-in and not changeable.
- Charge the battery in accordance with the instructions supplied with this guide.
- Use only USB "Limited Power Sources" charger models compliant with the IEC/UL 60950-1 clause 2.5 to charge the battery of your device: USB port of a computer, powered hub, wall charger or power supply.
- Do not attempt to force open the built-in battery.
- Storage 3 months max and temperature shall be 15°C +/-10°C.

## Disposal and Recycling Information

This symbol on the product or on its packaging indicates that this product must not be disposed of with your other household waste. Instead, it is your responsibility to dispose of your waste equipment by handing it over to a designated collection point for the recycling of waste electrical and electronic equipment. The separate collection and recycling of your waste equipment at the time of disposal will help to conserve natural resources and ensure that it is recycled in a manner that protects human health and the environment. For more information about where you can drop off your waste equipment for recycling, please contact your local city office, your household waste disposal service or the shop where you purchased the product.

- Do not dispose of the device with household waste.
- Batteries are not to be disposed of in municipal waste stream and require separate collection.
- Disposal of the packaging and your device should be done in accordance with local regulations.